

Standard pressure gauges

Nominalsize NG 80 and NG 100
Accuracy class 1,6

to DIN EN 837-1

Features

Plastic case ABS
Copper alloy measuring system



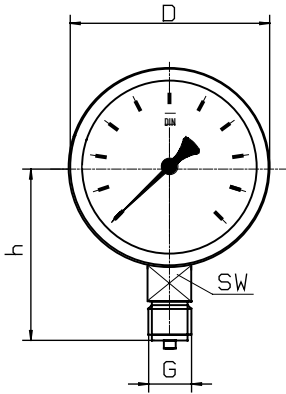
Applications

Pneumatic control systems
Air-conditioning
Sprinkler systems

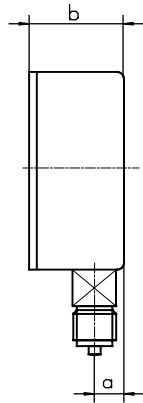
Model and NG	MR-10 80	MR-14 80	MR-10 100	MR-14 100
Connection	bottom	back,centric	bottom	back,centric
Ranges in bar	0...0,6, 1, 1,6, 2,5, 4, 6, 10, 16, 25, 40, 60, 100, 160, 250, 400 -1 / 0, -1 / +0,6, -1 / +1,5, -1 / +3, -1 / +5, -1 / +9, -1 / +15,			
Application	Constant load 3/4 x end of scale value Alternating load 2/3 x end of scale value Short-time : end of scale value			
Case	Plastic,black (ABS)		Steel,black	
Window	Plexiglass clipped on			
Dial	Aluminium white, Skale black			
Pointer	Aluminium,black			
Movement	CuZn alloy			
Measuring element	Cu alloy			
Connection	CuZn alloy			
Connectionthread	G 1/2 B	G 1/4 B	G 1/2 B	G 1/4 B
Temperatures	Media : -20°C bis 60°C, Ambient : -40°C bis 60°C			
Weight	0,18 kg	0,19 kg	0,3 kg	0,3 kg

Dimensions

Connection bottom

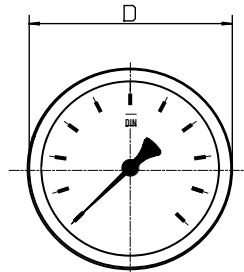


Front flange

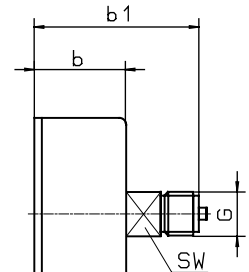


Rear flange

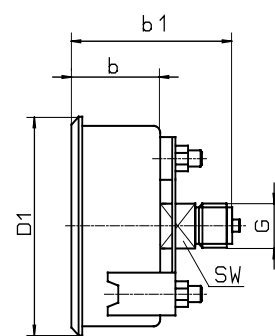
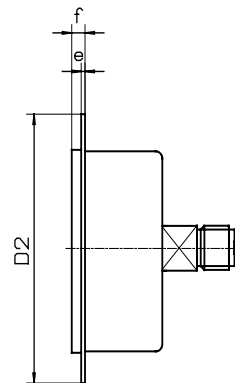
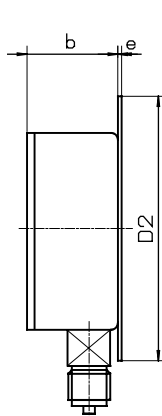
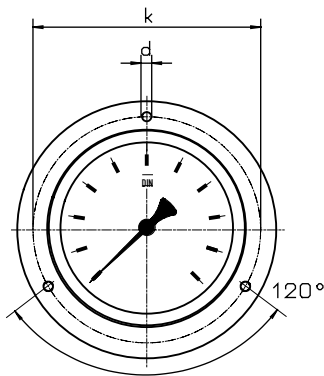
Connection back



Front flange



with triangle bezel and U-clamp



Dimensions in mm														
Model	NG	D	a	b	b1	h	D1	D2	e	f	k	d	sw	G
MR-10	80	80	11,5	31	-	72	86	-	-	-	-	-	14	G 1/2 B
MR-14	80	80	-	31	49	-	86	-	-	-	-	-	14	G 1/4 B
MR-10	100	100	11,5	31	-	84	107	132	2	6	116	5	14	G 1/2 B
MR-14	100	100	-	31	49	-	107	132	2	6	116	5	14	G 1/4 B

Modelspecification

Model
MR-1

Connection
0 or 4
Bottom = 0
Back centric = 4

Nominal size
80 or 100

ND 80 = 80
ND 100 = 100

Range
f.e. 10 bar

after rangespecification
for 10 bar = 010

Options

for example : front mounting flange